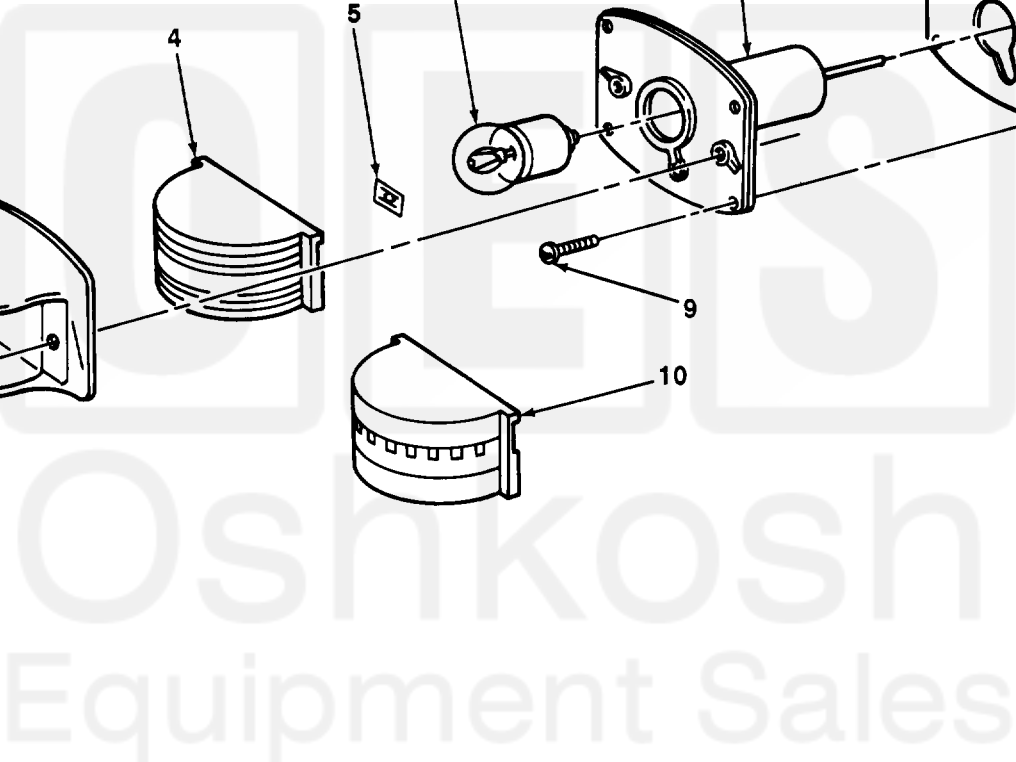
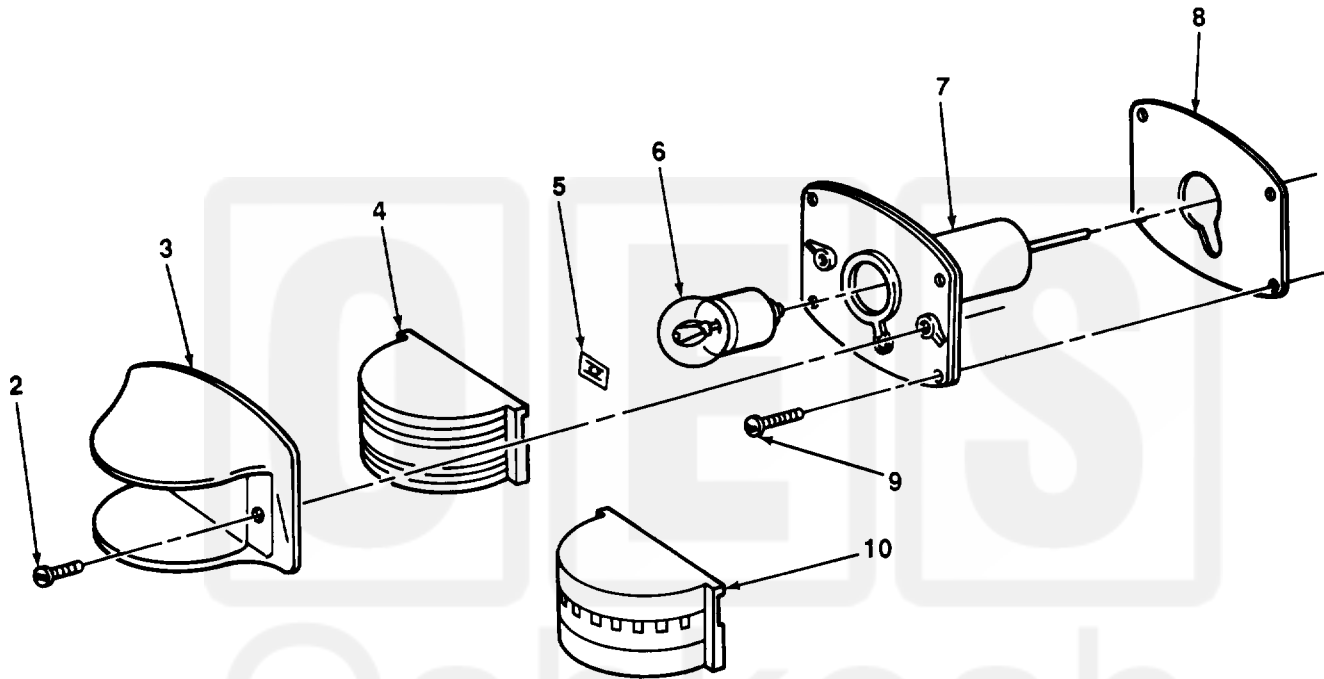
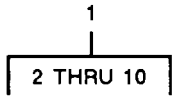


SECTION II

TM 9-2330-238-24P



TA506639

FIGURE 11. MARKER CLEARANCE LIGHT.

Current part is item (1) on diagram. Available at www.oshkoshequipment.com

SECTION (1) ITEM NO	II (2) SMR CODE	(3) CAGEC	TM9-2330-238-24P (4) PART NUMBER	(5) DESCRIPTION AND USABLE ON CODES (UOC) GROUP 0609 LIGHTS FIG. 11 MARKER CLEARANCE LIGHT	(6) QTY
1	PAD000	96906	MS35424-1	LIGHT ,MARKER,CLEARA AMBER BLACKOUT	2
1	PA000	19207	MS35423-1	LIGHT ,MARKER,CLEARA AMBER SERVICE (AB) UOC:855	2
1	PA000	19207	MS35423-1	LIGHT ,MARKER,CLEARA AMBER SERVICE (AF) UOC:855	5
1	PA000	19207	7261916	LIGHT ,MARKER,CLEARA RED SERVICE (AB) UOC:855	2
1	PA000	19207	7261916	LIGHT ,MARKER,CLEARA RED SERVICE (AF) UOC:855	5
1	PA000	19207	MS35423-1	LIGHT ,MARKER,CLEARA AMBER SERVICE UOC:290 ,852,854,856	2
1	PA000	19207	7261916	LIGHT ,MARKER,CLEARA RED SERVICE UOC:290 ,852,854,856	2
1	PA000	19207	7261918	LIGHT ,MARKER,CLEARA BLACKOUT, RED (AB,AC,AD)	2
2	PAOZZ	96906	MS51959-61	SCREW,MACHINE DOOR ATTACH (AF) UOC:855	28
2	PAOZZ	96906	MS51959-61	SCREW,MACHINE DOOR ATTACH UOC:290 ,852,854,856	16
3	PAOZZ	19207	7526516	RETAINER,LENS MARKER CLEARANCE LIGHT (AF) UOC:855	14
3	PAOZZ	19207	7526516	RETAINER,LENS MARKER CLEARANCE LIGHT UOC:290 ,852,854,856	8
4	PAOZZ	19207	7525994	LENS,LIGHT SERVICE AMBER (AF) UOC:855	5
4	PAOZZ	19207	7525995	LENS ,LIGHT SERVICE RED (AF) UOC:855	5
4	PAOZZ	19207	7525994	LENS ,LIGHT SERVICE, AMBER UOC:290 ,85,854,856	2
4	PAOZZ	19207	7525995	LENS ,LIGHT SERVICE, RED UOC:290 ,852,854,856	2
5	PAOZZ	19207	7526796	PUSH ON NUT LENS RETAINING UOC:290 ,852,854,856	16
5	0AOZZ	19207	7526796	PUSH ON NUT LIGHT LENS RETAINING (AF) UOC:855	28
6	PAOZZ	19207	190877	LAMP,INCANDESCENT MARKER CLEARANCE LIGHT (AF) UOC:855	14
6	PAOZZ	19207	190877	LAMP,INCANDESCENT MARKER CLEARANCE LIGHT UOC:290 ,852,854,856	8

Current part is item (1) on diagram. Available at www.oshkoshequipment.com